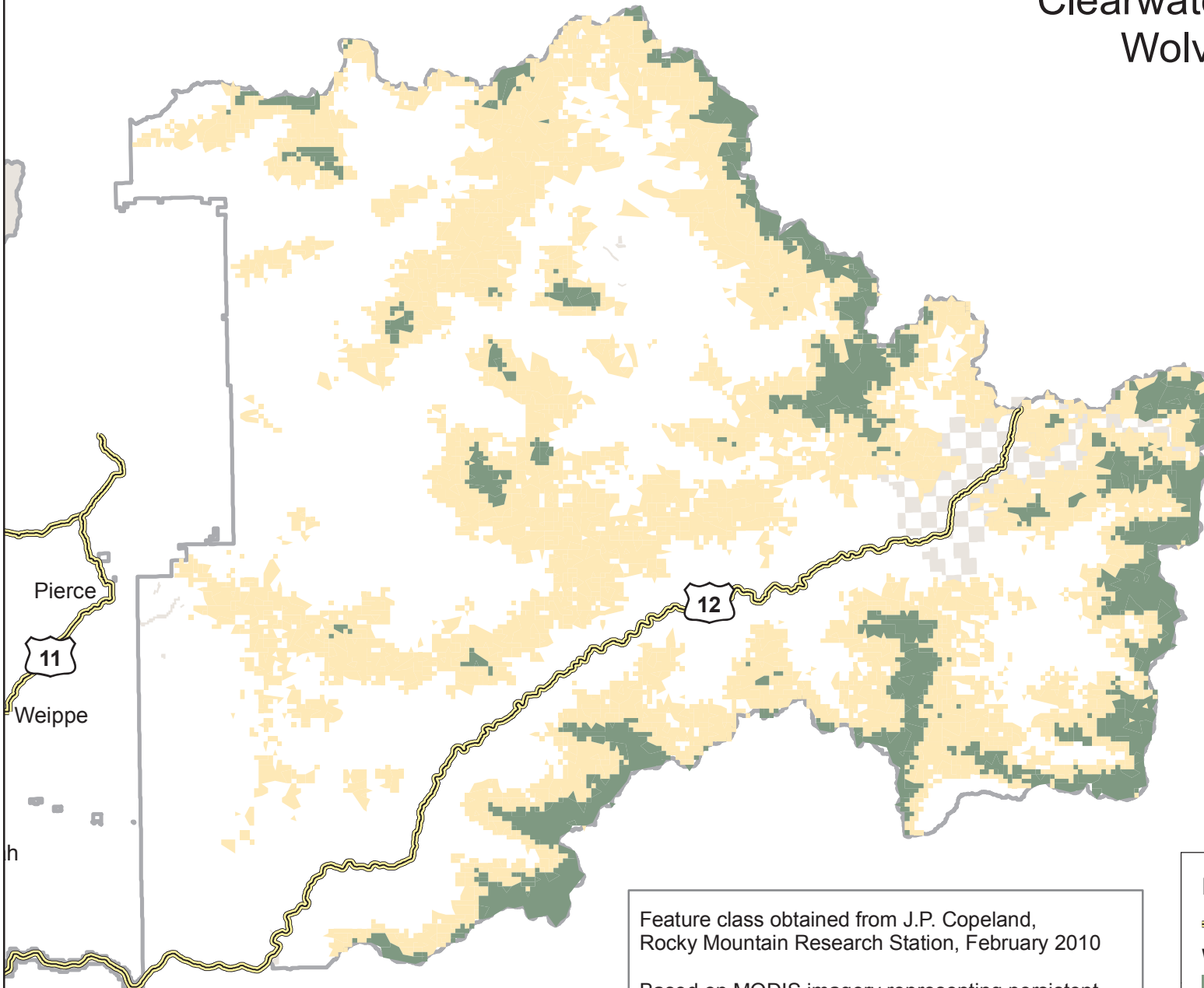


Note: No Lynx Habitat is mapped on the Palouse District

# Clearwater National Forest Wolverine Habitat



Feature class obtained from J.P. Copeland,  
Rocky Mountain Research Station, February 2010

Based on MODIS imagery representing persistent  
snow cover from 24 April to 15 May, which  
encompasses the end of the wolverine's reproductive  
denning period.

**Legend**

- Highways
- Wolverine Habitat**
  - Denning Habitat (159,856 acres)
  - Suitable Habitat (590,345 acres)
- Administrative Forest Boundary
- Non FS lands within Admin Boundary



5/24/10